

Working Instruction, Mechanical

Applicable for W900

CONTENTS

1	Read this first!	2
2	Introduction	3
3	Repair actions	4
3.1	Battery Cover & Battery	5
3.2	Panel Key Front Assy	6
3.3	Case Key Rear Sub Assy	7
3.4	PWB Assy	11
3.5	System Connector	12
3.6	Vibrator	13
3.7	Cushion Loudspeaker	14
3.8	Cushion Camera 2 M	15
3.9	Button Updown	16
3.10	Button Music	17
3.11	Cover MS	18
3.12	Button Shutter	19
3.13	Antenna	20
3.14	FPC Key & Frame, RF Assy	21
3.15	Camera 2 M	26
3.16	Frame BB Assy	27
3.17	Button Key	28
3.18	Case Key Front Assy & Frame Hinge A & B	29
3.19	Hinge	30
3.20	Panel LCD Rear	31
3.21	Case LCD Rear	32
3.22	Bush Hinge	34
3.23	Harness	35
3.24	Camera F	37
3.25	Magnet	38
3.26	Camera F Grommet	39
3.27	Frame LCD Assy	40
3.28	Cushion LCD 2	41
3.29	Receiver	42
3.30	Button LCD	43
3.31	Button LCD Top & Center	44
3.32	FPC LCD & LCD	45
4	Label	51
5	Revision history	52

1 Read this first!

After downloading and extracting the Working Instruction zip file, you will get access to this document.

To watch the repair movies, Flash Player version 6 or later must be installed on your computer.

The Flash Player can be downloaded free of charge from www.adobe.com.

However, when running the movies on a Windows XP computer with Service Pack 2 installed, the movies become blocked each time you try to access them and will not be launched until you have accepted to unblock the content and then again confirmed the action.

To avoid this, you can adjust your computer's security settings in the following way:

- open Internet Explorer
- click Tools / Internet Options / Advanced, and scroll down until you find Security
- check the box with the text 'Allow active content to run in files on My Computer'

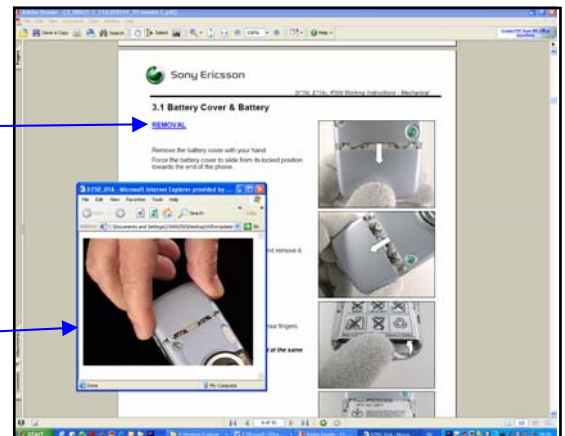
NOTE!

Do not change this setting unless you are aware of how this will affect the security of your computer!

Some of the Removal and Assembly headings have got blue colour and are underlined.

By clicking on such a heading, an Internet Explorer window opens, showing a video clip of the removal or assembly instruction

After having the first movie window opened, you should adjust the size of the Internet Explorer window until it looks like the adjacent picture example.



After reading section 2 'Introduction' and the start of section 3 'Repair Actions', do as follows when a mechanical part needs to be replaced:

- Search for the part name on the contents page and go to the page number where the instruction is found
- Disassemble the phone as far as needed by moving to the instructions stated as e.g. *Follow the Removal instructions of sections 3.1 – 3.6*
- Carry out the actual repair action as described
- Assemble the phone by moving to the instructions stated as e.g. *Follow the Assembly instructions of sections 3.6 – 3.1 (pls. note the reverse order)*

2 Introduction

SPECIAL TOOLS

- NTZ 122 459 Torque screwdriver (or equivalent)
- NTZ 122 288 Torx bit no 6
- NTZ 112 1052 Phillips bit
- NTZ 122 521 Flex film assembly tool



STANDARD TOOLS

The following tools have to be locally purchased:

- Dentist Hook
- Blunt pair of tweezers
- Guitar pick



ESD EQUIPMENT

Protect the phone from ESD damages whenever it has been opened by using:

- ESD-gloves (cotton gloves)
- ESD-wristband

CAUTIONS

- **Keep all contact surfaces clean, no dirt or hand grease!**
- **Be careful when using tools like the dentist hook, tweezers, opening tools, guitar pick etc. to avoid scratches or damages to the exterior and interior parts of the phone!**
- **Be careful not to damage the contact springs on parts like the vibrator!**
- **Remember to remove the protection foils on new parts such as the front case and the LCD!**
- **Never touch the display glass!**
- **Use air blow equipment to keep the front window and display module dust free!**

ADHESIVES

Use a dentist hook or a blunt pair of tweezers to remove old adhesives.

If necessary, clean the surface with isopropyl alcohol before attaching new adhesives.

3 Repair actions

W900



PRECAUTIONARY ACTIONS

Switch off the phone.



Remove the Memory Stick.



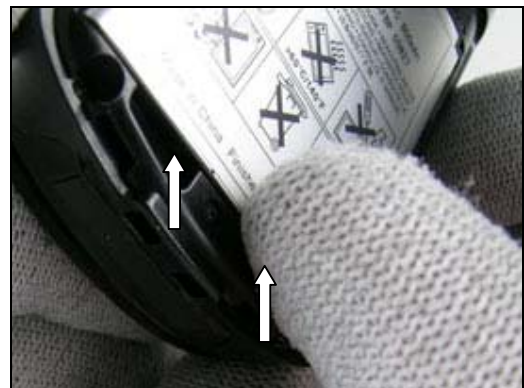
3.1 Battery Cover & Battery

REMOVAL

Press on the line to unhook the Battery Cover Clip.
Remove the Battery Cover.



Grab the Battery and pull the Battery up to remove it.



INSTALLATION

Install the Battery.



Install the Battery Cover.



3.2 Panel Key Front Assy

REMOVAL

THE PANEL KEY FRONT ASSY IS ATTACHED WITH ADHESIVE!

Open the phone.

Release the Panel Key Front Assy with a dentist hook.



INSTALLATION

USE A NEW PANEL KEY FRONT ASSY!

Clean the cavity with Isopropanol.

Use your fingers to install the Panel Key Front Assy in the cavity.

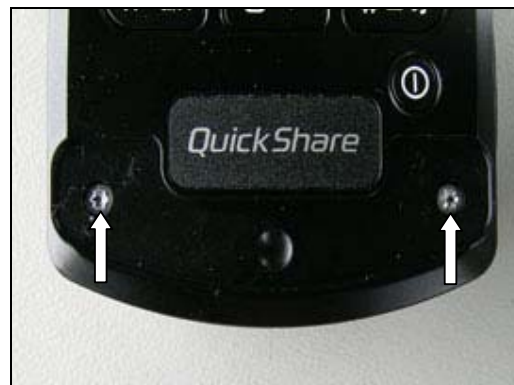


3.3 Case Key Rear Sub Assy

REMOVAL

Follow the Removal instructions of sections 3.1 – 3.2.

Use Torx bit no 6 to remove the two screws.



Use Torx bit no 6 to remove the four screws.



Position the guitar pick and slide it down towards the System Connector to separate the Case Key Front Assy from the Case Key Rear Assy.

Repeat at the other side.

If necessary slide the guitar pick on both side of the system connector.



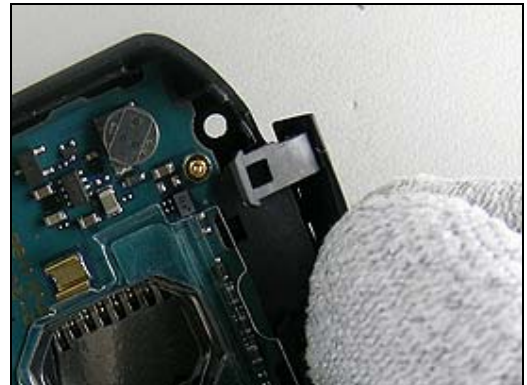
BE CAREFUL NOT TO DAMAGE THE HARNESS DURING THIS PROCEDURE!

Careful lift up the Case Key Front Assy.



Case Key Rear Sub Assy *continued*

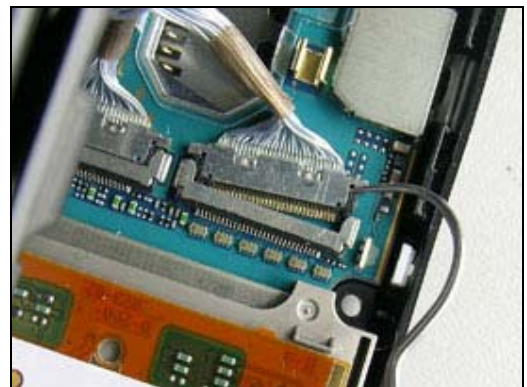
Remove the System Connector Cover.



Use the dentist hook to remove the Harness Protection Tape.



Use a dentist hook to disconnect the Harness Connectors from the PWB.

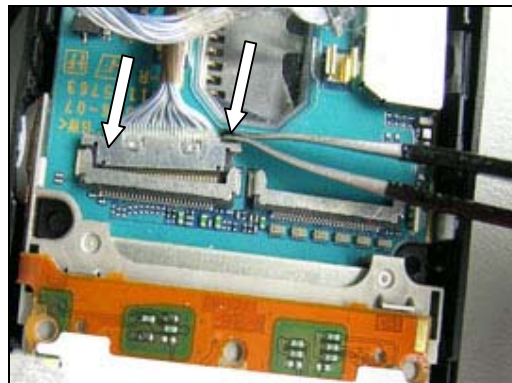


Case Key Rear Sub Assy *continued*

INSTALLATION

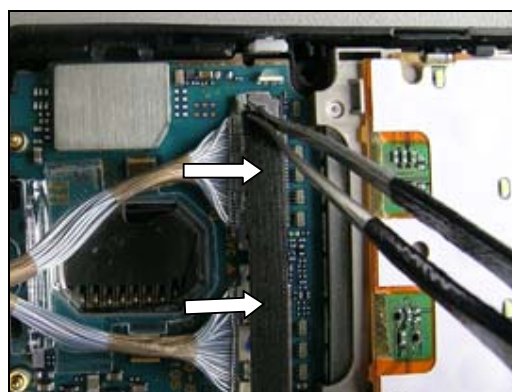
BE CAREFUL NOT TO DAMAGE THE HARNESS, THE PCB OR THE CONNECTORS DURING THIS PROCEDURE!

Use a blunt pair of tweezers or a Flex Assembly Tool to position the Harness Connectors and connect them.



USE A NEW HARNESS PROTECTION TAPE!

Use a pair of tweezers to reassemble the Harness Protection Tape.

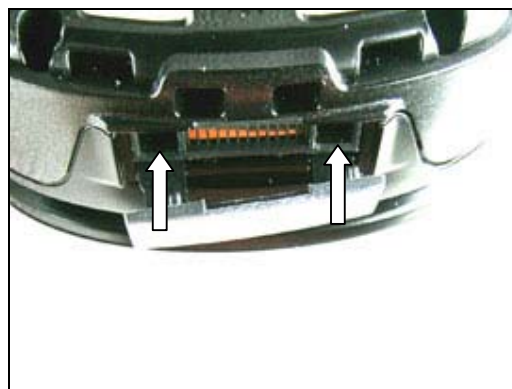


Position the Case Key Rear Sub Assy onto the Case Key Front Sub Assy.

Press gently on the Case Key Rear Sub Assy to attach both covers to each other.



Insert the tabs of the System Connector cover into the gaps above the System Connector.



Case Key Rear Sub Assy *continued*

Use Torx bit no 6 to tighten the two screws using the torque 20 ± 2 Ncm.



Use Torx bit no 6 to tighten the four screws using the torque 20 ± 2 Ncm.

Follow the Installation instructions of sections 3.2 – 3.1.

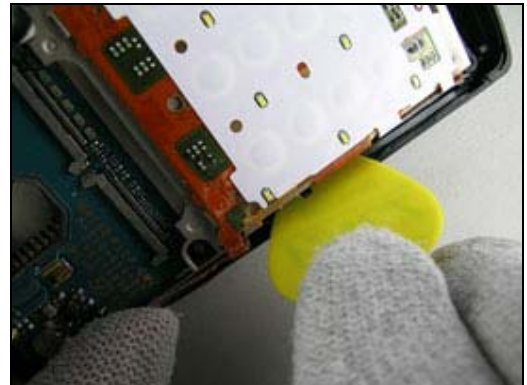


3.4 PWB Assy

REMOVAL

Follow the Removal instructions of sections 3.1 – 3.3.

Position the guitar pick and carefully bend it outward to release the PWB from the Case Key Rear Assy.



INSTALLATION

Place the PWB in the Case Key Rear Assy with the right edge first.



BE CAREFUL NOT DAMAGE THE MUSIC BUTTON!

Gently press down the PWB in the Case Key Rear Assy.

Follow the Installation instructions of sections 3.3 – 3.1.

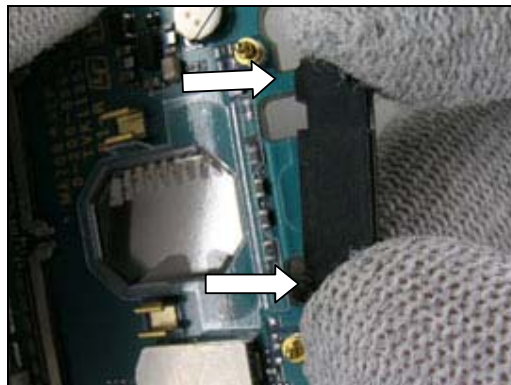


3.5 System Connector

REMOVAL

Follow the Removal instructions of sections 3.1 – 3.4.

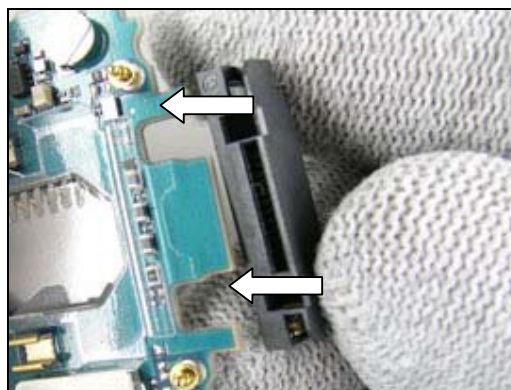
Use your fingers to remove the System Connector by pulling it outward.



INSTALLATION

Position the System Connector and gently press it onto the PWB with your fingers.

Follow the Installation instructions of sections 3.4 – 3.1.



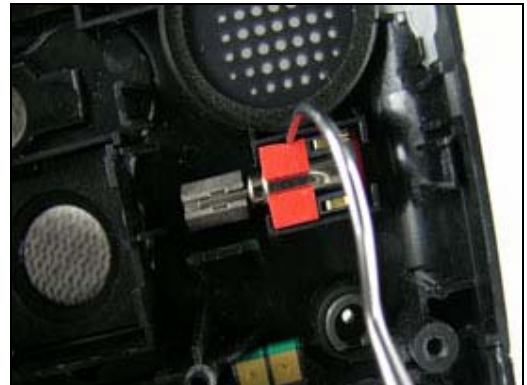
3.6 Vibrator

REMOVAL

Follow the Removal instructions of sections 3.1 – 3.4.

DO NOT LIFT THE VIBRATOR BY THE FLYWHEEL!

Use a dentist hook to gently lift the Vibrator from the Case Key Rear Assy.



INSTALLATION

DO NOT PRESS ON THE VIBRATORS FLYWHEEL!

Position the Vibrator in the Case Key Rear Assy.

Use a pair of tweezers to gently press on the Vibrator Coating down into the Case Key Rear cavity.

Follow the Installation instructions of sections 3.4 – 3.1.



3.7 Cushion Loudspeaker

REMOVAL

*Follow the Removal instructions of sections 3.1 – 3.4,
Use a dentist hook to remove the Cushion Loudspeaker.*



INSTALLATION

USE A NEW CUSHION LOUDSPEAKER!

Clean the Loudspeaker Cushion cavity in the Key Rear Sub Assy with Isopropanol.

Use a pair of tweezers to install a new Cushion Loudspeaker.

Follow the Installation instructions of sections 3.4 – 3.1.



3.8 Cushion Camera 2 M

REMOVAL

Follow the Removal instructions of sections 3.1 – 3.4.

Use a dentist hook to remove the Cushion Camera 2 M.

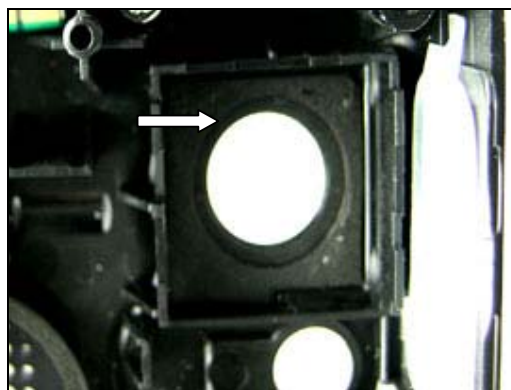


INSTALLATION

Clean the Cushion Camera 2 M cavity in the Key Rear Sub Assy with Isopropanol.

Position the Cushion Camera 2 M and install it with a pair of tweezers.

Follow the Installation instructions of sections 3.4 – 3.1.



3.9 Button Updown

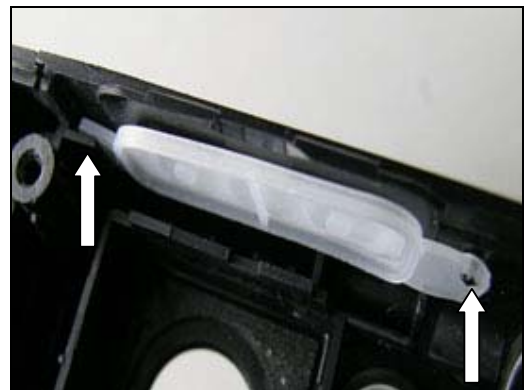
REMOVAL

Follow the Removal instructions of sections 3.1 – 3.4.
Use a dentist hook to remove the Button Updown.



INSTALLATION

The Key Rear Sub Assy has guiding pins which are located according to the arrows.



Position the Button Updown and use a pair of tweezers to install it.

Follow the Installation instructions of sections 3.4 – 3.1.



3.10 Button Music

REMOVAL

Follow the Removal instructions of sections 3.1 – 3.4.
Use a dentist hook to remove the Button Music.



INSTALLATION

Key Rear Sub Assy has on guiding pin.



Position the Button Music and use a pair of tweezers to install it.

Follow the Installation instructions of sections 3.4 – 3.1.



3.11 Cover MS

REMOVAL

Follow the Removal instructions of sections 3.1 – 3.4.

Use your fingers or a blunt pair of tweezers to gently remove the Cover MS.



INSTALLATION

Use your fingers or a blunt pair of tweezers to position the Cover MS.

Slide the flap through the slot to install the Cover MS.

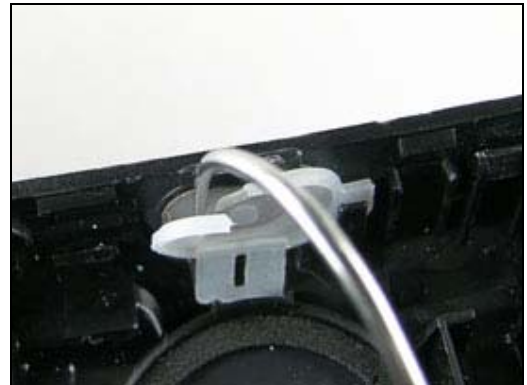
Follow the Installation instructions of sections 3.4 – 3.1.



3.12 Button Shutter

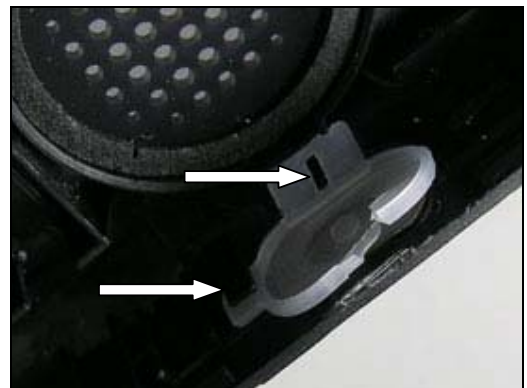
REMOVAL

Follow the Removal instructions of sections 3.1 – 3.4.
Use a dentist hook to remove the Button Shutter.



INSTALLATION

The Key Rear Sub Assy has two guiding pins.



Position the Button Shutter and install it with a pair of tweezers.

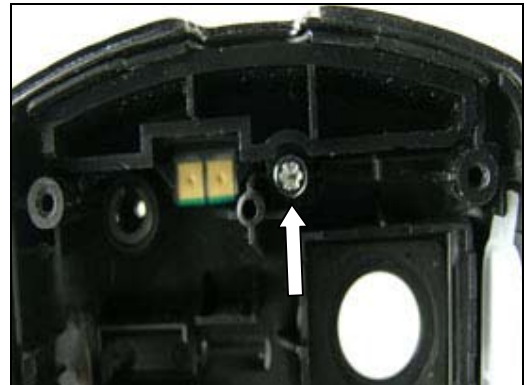
Follow the Installation instructions of sections 3.4 – 3.1.



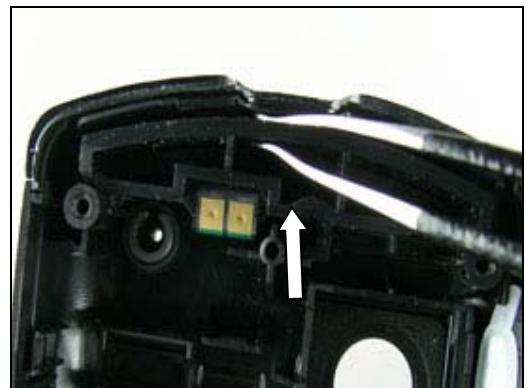
3.13 Antenna

REMOVAL

Follow the Removal instructions of sections 3.1 – 3.4.
Use Torx bit no 6 to remove the screw.



Use a pair of tweezers to remove the Antenna.



INSTALLATION

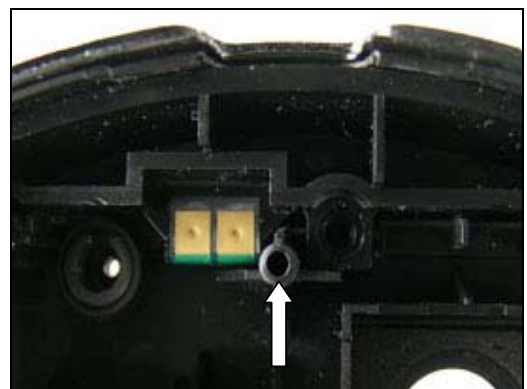
Position the Antenna in the cavity and use a pair of tweezers to install it.



USE A NEW SCREW!

Use Torx bit no 6 to tighten the screw using the torque 20 ± 2 Ncm.

Follow the Installation instructions of sections 3.4 – 3.1.



3.14 FPC Key & Frame, RF Assy

REMOVAL

Follow the Removal instructions of sections 3.1 – 3.4.

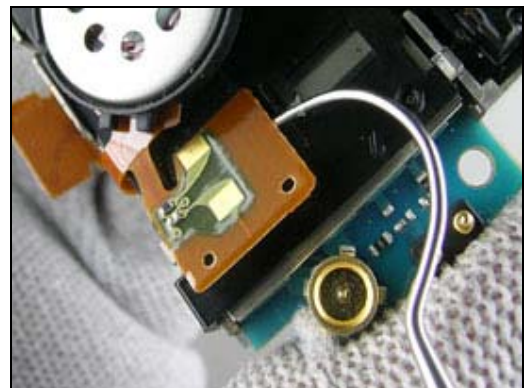
THE MUSIC BUTTON IS ATTACHED WITH ADHESIVE!

Use a dentist hook to carefully release the Music Button Ear from the FPC Key.



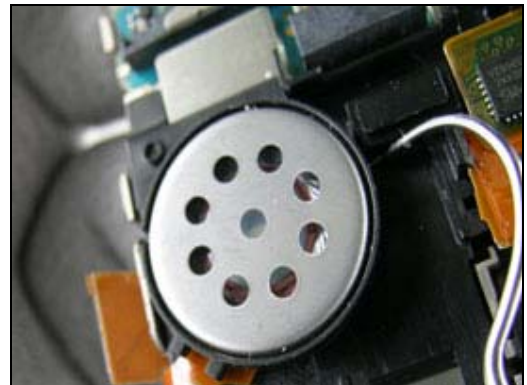
THE SMALL PCB IS ATTACHED WITH ADHESIVE!

Use a dentist hook to carefully release the small PCB with the Vibrator connectors from the Frame BB Assy.



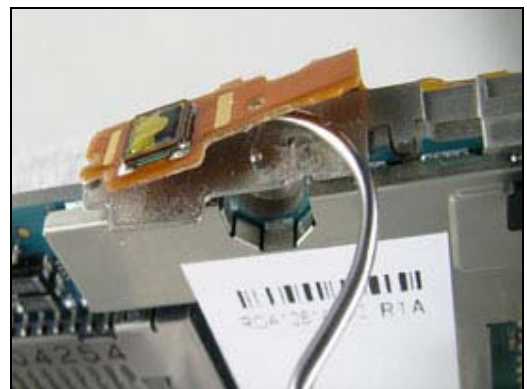
THE LOUDSPEAKER IS ATTACHED WITH ADHESIVE TAPE!

Use a dentist hook and carefully fold it upwards to release the Loudspeaker.



THE SHUTTER BUTTON IS ATTACHED WITH ADHESIVE!

Use a dentist hook to carefully release the Shutter Button from the FPC Key.

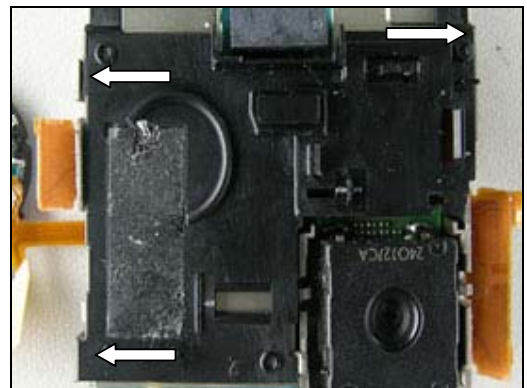


FPC Key and Frame, RF Assy continued

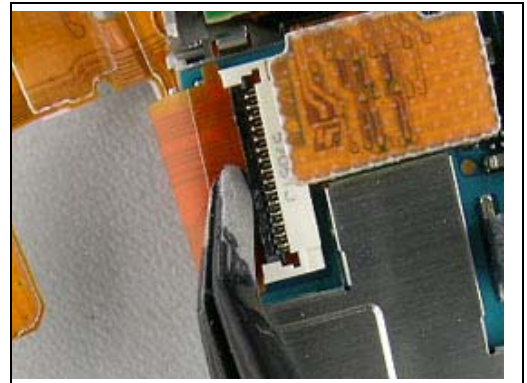
Use a dentist hook to carefully release the Flash PCB from the Frame RF Assy.



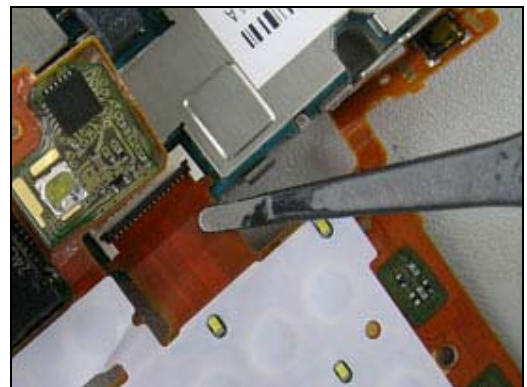
Use your fingers to release the three hooks of the Frame RF Assy from the Frame BB Assy and remove the Frame RF Assy.



Use a flex film assembly tool to open the ZIF connector of the FPC Key Assy.



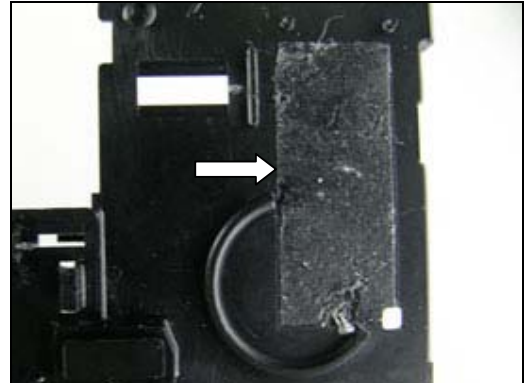
Use the flex film assembly tool to remove the Flex Film of the FPC Key Assy from the ZIF connector.



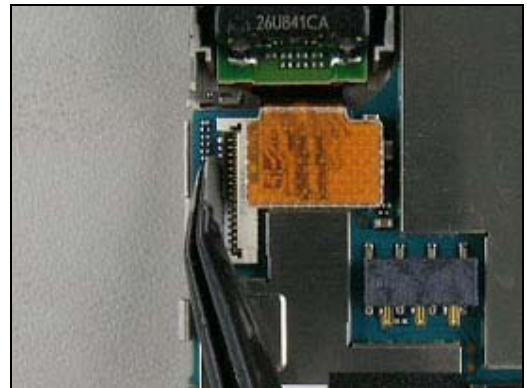
FPC Key and Frame, RF Assy *continued*

INSTALLATION

Clean the Frame BB Assy with Isopropanol.



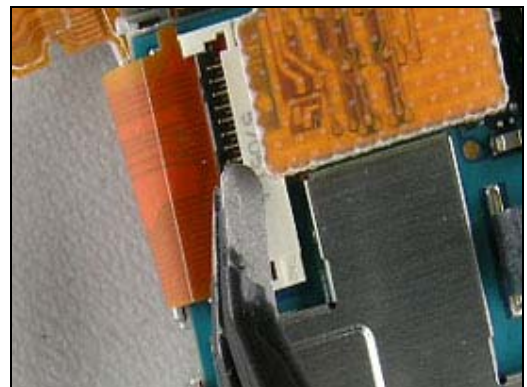
Use the flex film assembly tool to open the ZIF connector.



Use the flex film assembly tool to connect the FPC Key into the ZIF connector.



Use the flex film assembly tool to close the ZIF connector.



FPC Key and Frame, RF Assy continued

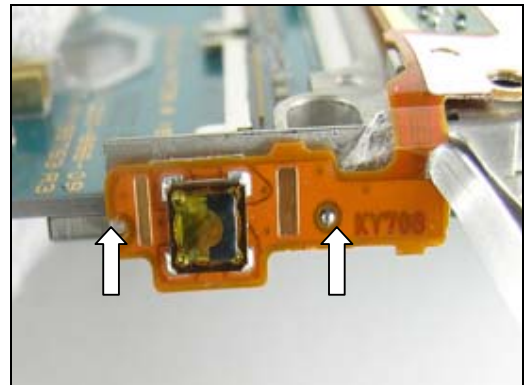
Use your fingers to position the FPC Key onto the Frame BB Assy and gently snap fit it into the right position.



Use your fingers to position the Flash PCB and gently press until the Flash PCB is fixed on the guiding pins and hooks.



Use a pair of tweezers to position the small PCB and gently press until the small PCB is fixed between the guiding pins.



Use your fingers to assemble the Loudspeaker.

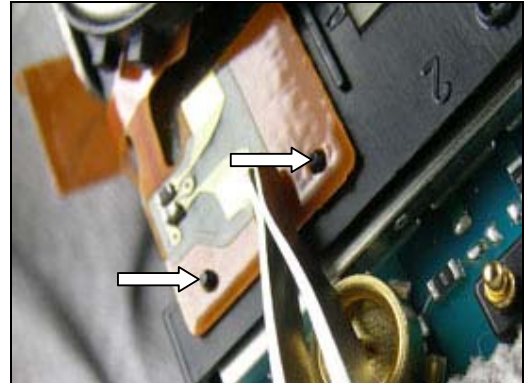


FPC Key and Frame, RF Assy *continued*

Clean the Frame BB Assy with Isopropanol.

Apply new adhesives on the corresponding places.

Use a pair of tweezers to position the small PCB and gently press until the small PCB is fixed between the guiding pins.



Use your fingers to attach the Music Button.

Follow the Installation instructions of sections 3.4 – 3.1.



3.15 Camera 2 M

REMOVAL

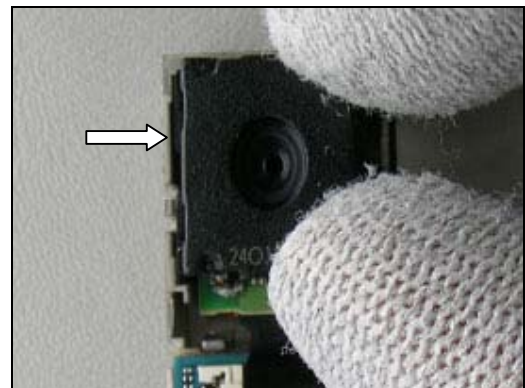
Follow the Removal instructions of sections 3.1 – 3.4 and 3.14.

Use a pair of tweezers or your fingers to disconnect the BTB Connector of the Camera 2 M.



BE CAREFUL NOT TO DAMAGE THE SNAPS HOOKS IN THE FRAME BB ASSY!

Use your fingers to gently lift up the Camera 2 M from the cavity in the Frame BB Assy.



INSTALLATION

Use your fingers to position the Camera 2 M and gently press it into the Frame BB Assy to snap them together.



Use your fingers and gently press down the Camera 2 M BTB Connector onto the PCB Connector to connect them. Follow the Installation instructions of sections 3.14 and 3.4 – 3.1.



3.16 Frame BB Assy

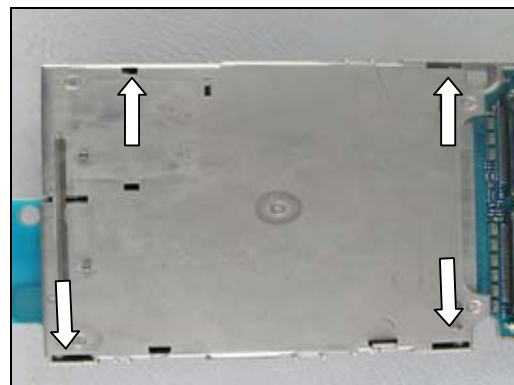
REMOVAL

Follow the Removal instructions of sections 3.1 – 3.4 and sections 3.14 – 3.15.

BE CAREFUL NOT TO DAMAGE THE SNAPS HOOKS IN THE FRAME BB ASSY!

Use your fingers to release the four hooks of the Frame BB Assy from the PWB.

Fold up the Frame BB Assy and remove it.



INSTALLATION

Position the Frame BB Assy and use your fingers to gently press the Frame BB Assy onto the PWB and snap them together.

Follow the Installation instructions of sections 3.15 – 3.14 and 3.4 – 3.1.



3.17 Button Key

REMOVAL

Follow the Removal instructions of sections 3.1 – 3.3.

Use a pair of tweezers to remove the Button Key from the Case Key Front Assy.

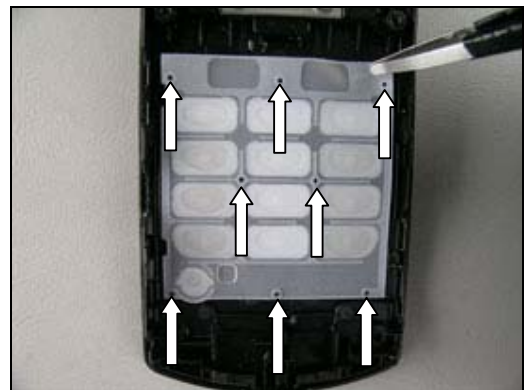


INSTALLATION

CAUTION TEXT!

Use the guiding pins to install the Button Key in the Case Key Front Sub Assy with a pair of tweezers.

Follow the Installation instructions of sections 3.3 – 3.1.



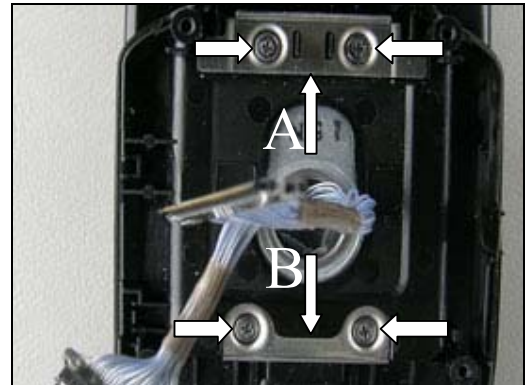
3.18 Case Key Front Assy & Frame Hinge A & B

REMOVAL

Follow the Removal instructions of sections 3.1 – 3.3.

Use the Phillips bit to remove the four screws.

Also remove the Frame Hinge A & B.



BE CAREFUL NOT TO DAMAGE THE HARNESS DURING THIS PROCEDURE!

Use your fingers to gently pull the harness through the hinge hole and remove the Case Key Front Assy.



INSTALLATION

BE CAREFUL NOT TO DAMAGE THE HARNESS DURING THIS PROCEDURE!

Use your fingers to gently insert the harness through the hinge hole and install the Case Key Front Assy.

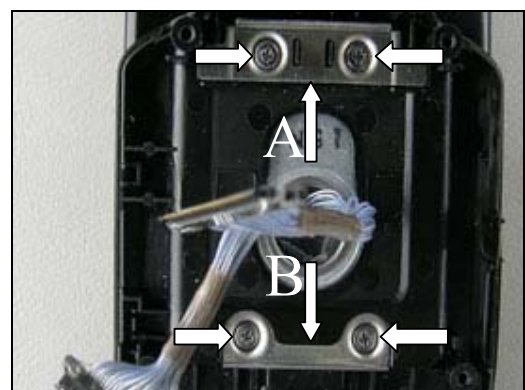


USE NEW SCREWS!

Place the Frame Hinge A & B in the Key Front Sub Assy Case cavity.

Use Phillips bit to tighten the four screws using the torque 12 ± 1.5 Ncm.

Follow the Installation instructions of sections 3.3 – 3.1.

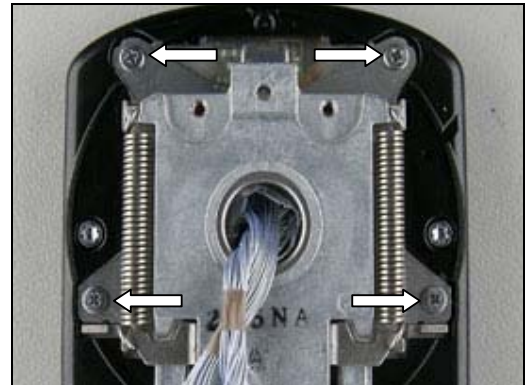


3.19 Hinge

REMOVAL

Follow the Removal instructions of sections 3.1 – 3.3 and 3.18.

Use the Philips bit to remove the four screws.



BE CAREFUL NOT TO DAMAGE THE HARNESS DURING THIS PROCEDURE!

Use your fingers to gently pull the harness through the Hinge and remove the Hinge.



INSTALLATION

BE CAREFUL NOT TO DAMAGE THE HARNESS DURING THIS PROCEDURE!

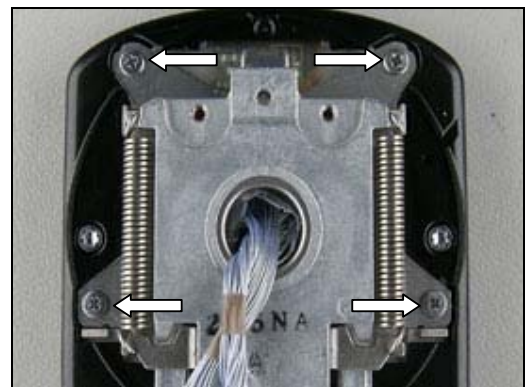
Use your fingers to gently pull the harness through the Hinge and position the Hinge in the Upper Block Assy cavity.



USE NEW SCREWS!

Use Phillips bit to tighten the four screws using the torque 12 ± 1.5 Ncm.

Follow the Installation instructions of sections 3.18 and 3.3 – 3.1.



3.20 Panel LCD Rear

REMOVAL

THE PANEL LCD REAR IS ATTACHED WITH ADHESIVE!

Use a dentist hook to remove the Panel LCD Rear.



INSTALLATION

USE A NEW PANEL LCD REAR!

Clean the Case LCD Rear with Isopropanol.

Use your fingers or a pair of tweezers to position the Panel LCD Rear in the Case LCD Rear cavity.

Press on the Panel LCD Rear to attach it.



3.21 Case LCD Rear

REMOVAL

Follow the Removal instructions of sections 3.1 – 3.3 and 3.18 – 3.20.

Use Torx bit no 6 to remove the four screws.



Insert a guitar pick and slide it to release the Case LCD Rear.

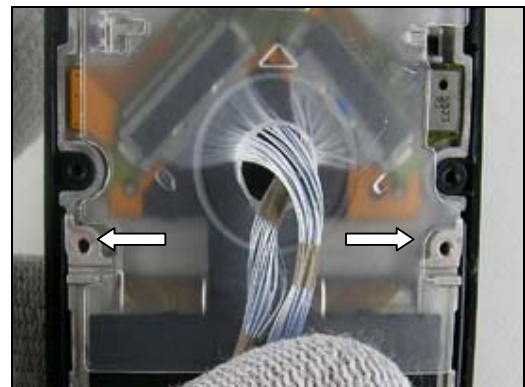
Remove the LCD Rear.



INSTALLATION

THE FRAME LCD ASSY HAS GUIDING PINS.

Position the Bush Hinge.



MAKE SURE THAT THE BUSH HINGE IS IN THE CORRECT POSITION!

Pull the harness through the Case LCD Rear Hinge hole.
Position the Case LCD Rear on top of the Case LCD Front Assy.

Press with your fingers to snap them together.



Case LCD Rear *continued*

USE NEW SCREWS!

Use Torx bit no 6 to tighten the four screws using the torque 20 ± 2 Ncm.

Follow the Installation instructions of sections 3.20 – 3.18 and 3.3 – 3.1.



3.22 Bush Hinge

REMOVAL

Follow the Removal instructions of sections 3.1 – 3.3 and 3.18 – 3.21.

BE CAREFUL NOT TO DAMAGE THE HARNESS DURING THIS PROCEDURE!

Use your fingers to pull the harness through the hole of the Bush Hinge and remove it.



INSTALLATION

BE CAREFUL NOT TO DAMAGE THE HARNESS DURING THIS PROCEDURE!

Use your fingers to pull the harness through the hole of the Bush Hinge.



**THE FRAME LCD ASSY HAS GUIDING PINS!
IF THE BUSH HINGE IS DAMAGED THEN REPLACE IT!**

Position the Bush Hinge as shown in the picture.

Follow the Installation instructions of sections 3.21 – 3.18 and 3.3 – 3.1.

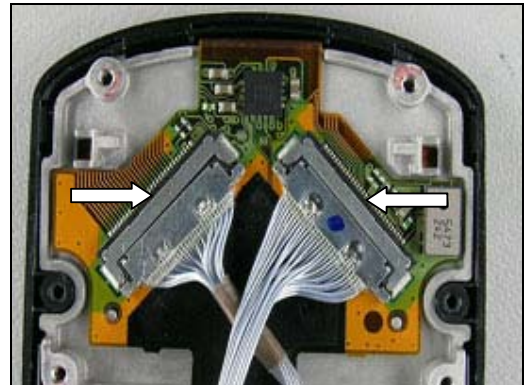


3.23 Harness

REMOVAL

Follow the Removal instructions of sections 3.1 – 3.3 and 3.18 – 3.22.

The Harness connectors are located here.



Use a dentist hook to remove the Harness Protection Tape.



Use a dentist hook to pull the Harness outwards and remove it.

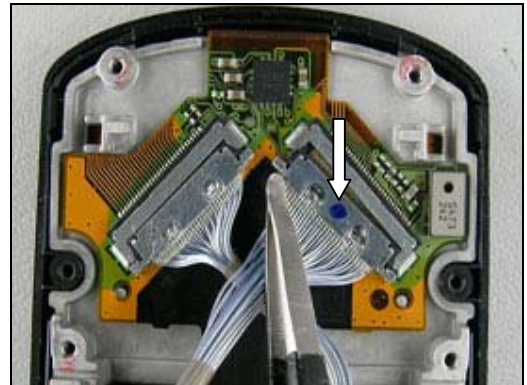


Harness *continued*

INSTALLATION

ONE OF THE HARNESS CONNECTORS HAS A BLUE DOT!

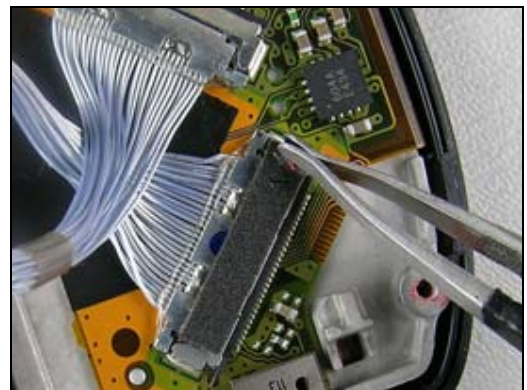
Position the Harness connector which has the blue dot over the other connector and into the right connector.



USE NEW HARNESS PROTECTION TAPE!

Use a pair of tweezers to reassemble the Harness Protection Tape.

Follow the Installation instructions of sections 3.22 – 3.18 and 3.3 – 3.1.



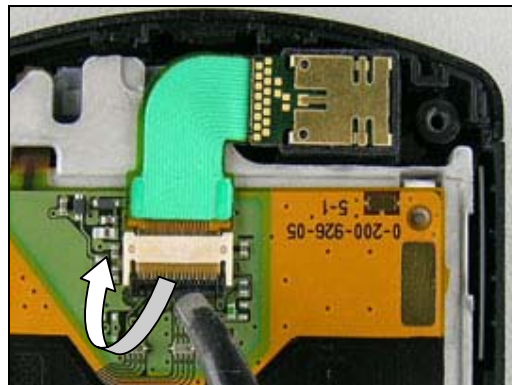
3.24 Camera F

REMOVAL

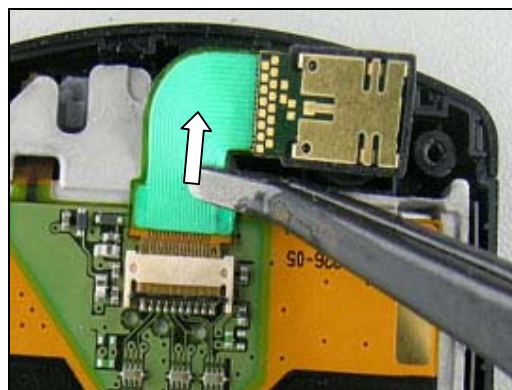
Follow the Removal instructions of sections 3.1 – 3.3 and 3.18 – 3.21.

BE CAREFUL NOT TO DAMAGE THE ZIF CONNECTOR DURING THIS PROCEDURE!

Use the flex film assembly tool to open the ZIF connector.



Use the flex film assembly tool to pull the Camera Flex Film upwards to disconnect it.



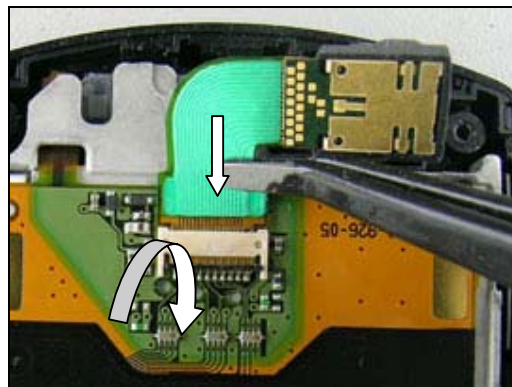
INSTALLATION

BE CAREFUL NOT TO DAMAGE THE CAMERA FLEX FILM OR THE ZIF CONNECTOR DURING THIS PROCEDURE!

Use a blunt pair of tweezers to open the ZIF Connector.

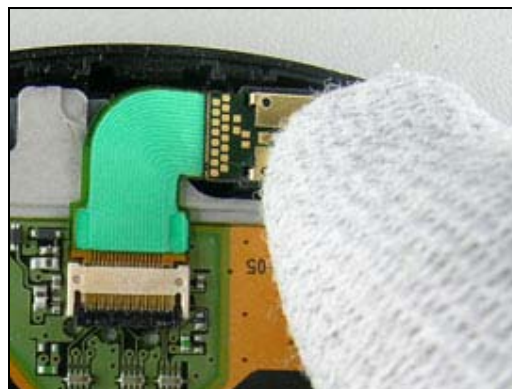
Use the flex film assembly tool to insert the Camera Flex Film into the ZIF Connector.

Close the connector.



Use your fingers to position the Camera F into the cavity. Press gently on the Camera F until it is fixed.

Follow the Installation instructions of sections 3.21 – 3.18 and 3.3 – 3.1.



3.25 Magnet

REMOVAL

Follow the Removal instructions of sections 3.1 – 3.3 and 3.18 – 3.21.

Use a dentist hook to remove the Magnet.



INSTALLATION

THE MAGNETS RED LINE SHALL BE FACED UPWARDS TO HAVE THE CORRECT POLARIZATION!

Use a pair of tweezers to position the Magnet in the Case LCD Rear cavity.

Use a pair of tweezers to press down the Magnet.

Follow the Installation instructions of sections 3.21 – 3.18 and 3.3 – 3.1



3.26 Camera F Grommet

REMOVAL

Follow the Removal instructions of sections 3.1 – 3.3, 3.18 – 3.21 and 3.24.

BE CAREFUL NOT TO DAMAGE THE CAMERA F DURING THIS PROCEDURE!

Use a pair of tweezers to remove the grommet from the Camera F.



INSTALLATION

Use your fingers to install the grommet on the Camera.

Follow the Installation instructions of sections 3.24, 3.21 – 3.18 and 3.3 – 3.1.



3.27 Frame LCD Assy

REMOVAL

Follow the Removal instructions of sections 3.1 – 3.3 and 3.18 – 3.24.

Position the guitar pick and bend it outwards to release the Frame LCD Assy from the Case LCD Font Assy.

Remove the Framed LCD Assy.



INSTALLATION

MAKE SURE THAT THE CASE LCD FONT ASSY INCLUDES THE KEY PAD AND THE RECEIVER BEFORE THIS PROCEDURE!

Use your fingers to snap the Frame LCD Assy into the LCD Front Sub Assy.

Follow the Installation instructions of sections 3.24 – 3.18 and 3.3 – 3.1.



3.28 Cushion LCD 2

REMOVAL

Follow the Removal instructions of sections 3.1 – 3.3, 3.18 – 3.24 and 3.27

THE CUSHION LCD 2 IS ATTACHED WITH ADHESIVE!

Use the dentist hook to gently remove the Cushion LCD 2.



INSTALLATION

Clean the LCD with Isopropanol.

Use a pair of tweezers to position the Cushion LCD 2 on the LCD and press gently until it is fixed.

Follow the Installation instructions of sections 3.27, 3.24 – 3.18 and 3.3 – 3.1.



3.29 Receiver

REMOVAL

Follow the Removal instructions of sections 3.1 – 3.3, 3.18 – 3.24 and 3.27.

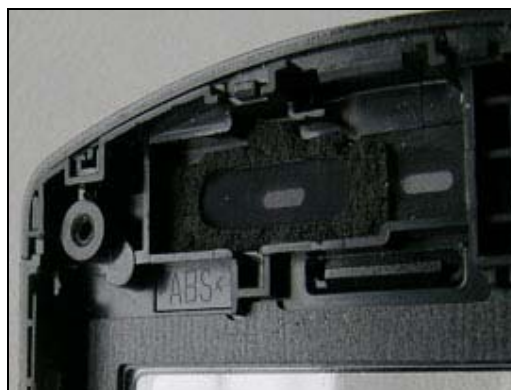
THE RECEIVER IS ATTACHED WITH ADHESIVE!

Use the dentist hook to gently pull the Receiver upwards and remove it.



INSTALLATION

Clean the Receiver cavity with Isopropanol.



Use a pair of tweezers to position the Receiver in the cavity and press gently until it is fixed.

Follow the Installation instructions of sections 3.27, 3.24 – 3.18 and 3.3 – 3.1.



3.30 Button LCD

REMOVAL

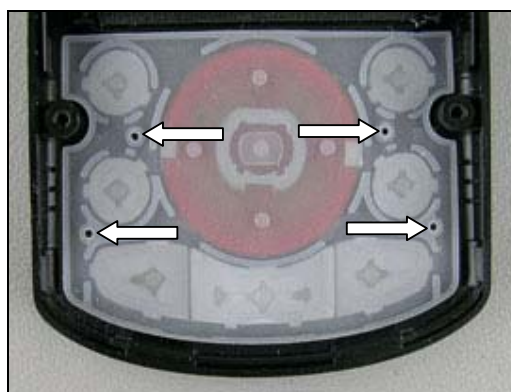
Follow the Removal instructions of sections 3.1 – 3.3, 3.18 – 3.24 and 3.27.

Use a pair of tweezers to remove the Button LCD.



INSTALLATION

The Case LCD Front Assy has guiding pins.



Use a pair of tweezers to position the Button LCD.

Follow the Installation instructions of sections 3.27, 3.24 – 3.18 and 3.3 – 3.1.



3.31 Button LCD Top & Center

REMOVAL

Follow the Removal instructions of sections 3.1 – 3.3, 3.18 – 3.24, 3.27 and 3.30.

Use your fingers to remove the Button LCD Top and Center.



INSTALLATION

Install the Button LCD Top into the cavity in the LCD Front Sub Assy with your finger.

Note the orientation of the Button LCD Top.

The ears must correspond to the right cuts in the Frame LCD Front Sub Assy.



Install the Button LCD Center into the cavity in the Button LCD Top.

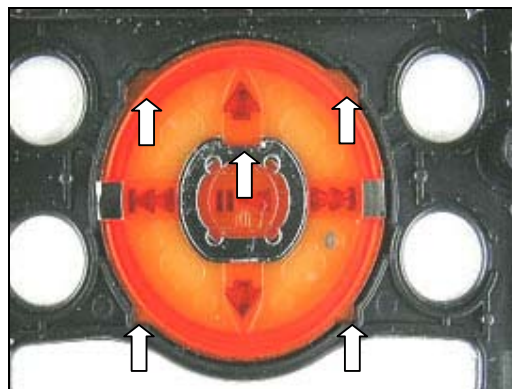
Note the orientation of the Button LCD Center.

The notch in the Button LCD Center must correspond to the cut in the Button LCD Top.



THE POSITION OF THE TAPS OF THE BUTTON LCD TOP AND CENTER AND THE NOTCH IN THE CASE, LCD FRONT SUB ASSY AND IN THE BUTTON LCD TOP SHALL BE AS SHOWN IN THE PICTURE!

Follow the Installation instructions of sections 3.30, 3.27, 3.24 – 3.18 and 3.3 – 3.1.

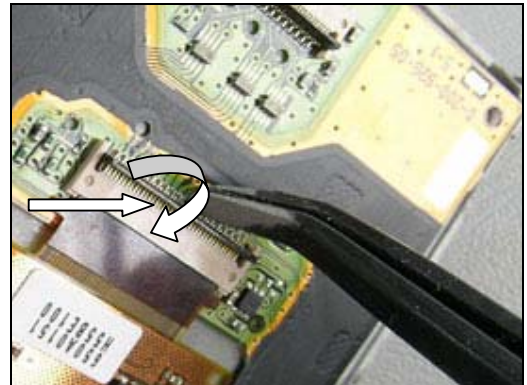


3.32 FPC LCD & LCD

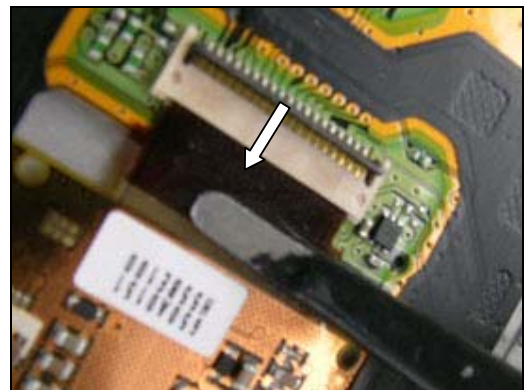
REMOVAL

Follow the Removal instructions of sections 3.1 – 3.3, 3.18 – 3.24, and 3.27.

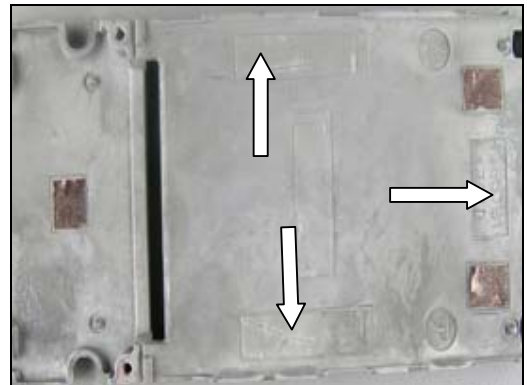
Use the flex film assembly tool to open the ZIF connector.



Use the Flex Film Assembly tool to remove the LCD Flex Film.

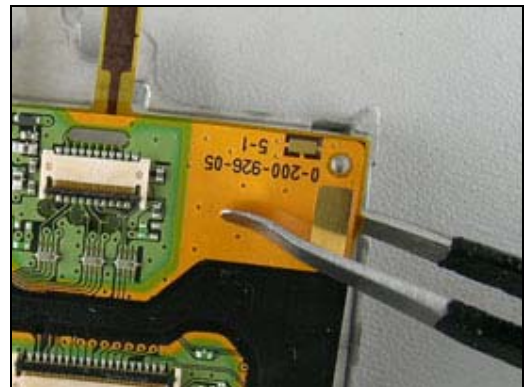


THE FRAME LCD ASSY REAR WITH ADHESIVE!



THE FPC LCD IS ATTACHED WITH ADHESIVE!

Use a pair of tweezers to gently release the FPC LCD from the Frame LCD Assy.



FPC LCD & LCD *continued*

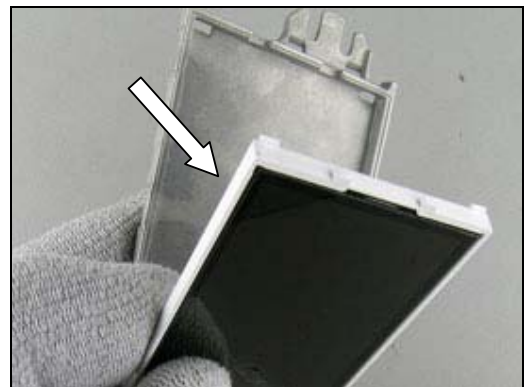
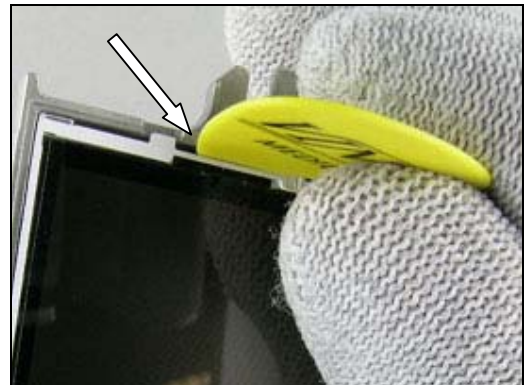
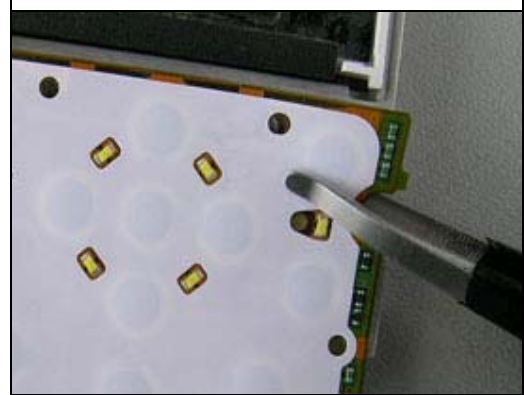
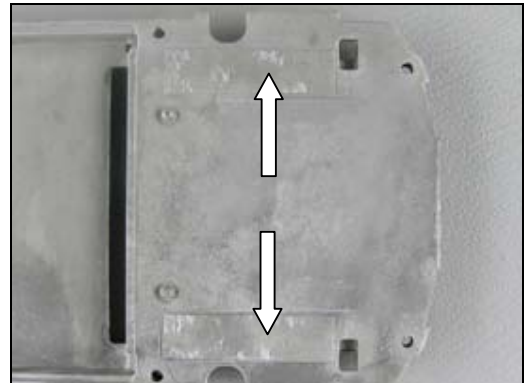
THE FRAME LCD ASSY FRONT WITH ADHESIVE!

Go on to the opposite side and start at the Sheet Key LCD to fold over the edge.

Press the guitar pick in the gap between the LCD and the Frame LCD Assy and bend to release the LCD.

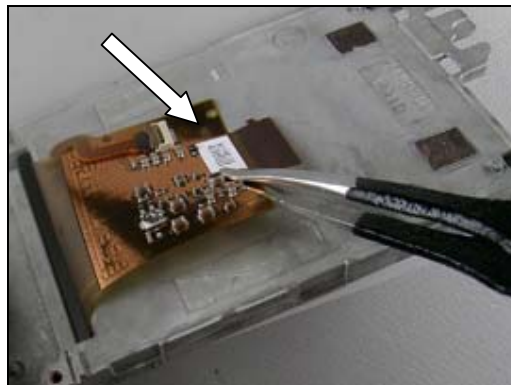
BE CAREFUL NOT TO DAMAGE THE LCD FLEX FILM DURING THIS PROCEDURE!

Lift up the Frame LCD Assy.



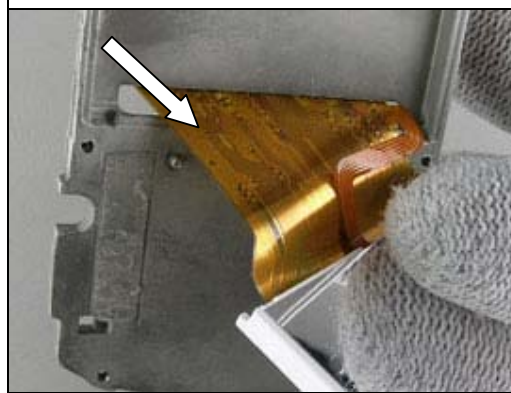
FPC LCD & LCD *continued*

**THE LCD FLEX FILM IS ATTACHED WITH ADHESIVE!
USE A PAIR OF TWEEZERS TO GENTLY RELEASE THE LCD FLEX
FILM FROM THE FRAME LCD ASSY.**



**BE CAREFUL NOT TO DAMAGE THE LCD FLEX FILM DURING
THIS PROCEDURE!**

Use your fingers and let the Flex Film gently slide through
the hole in the Frame LCD Assy.

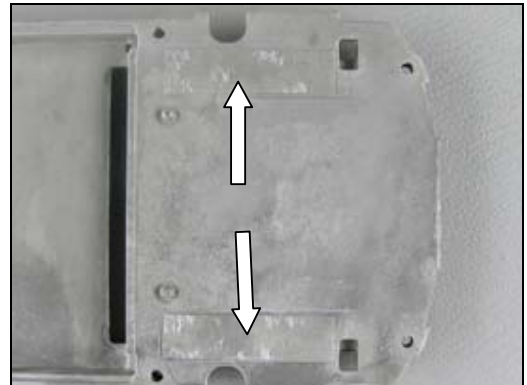


FPC LCD & LCD *continued*

INSTALLATION

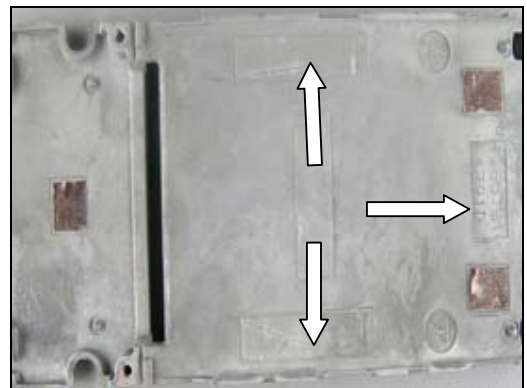
CLEAN THE FRAME LCD ASSY FRONT WITH ISOPROPANOL!

Attach new adhesive FPC LCD.

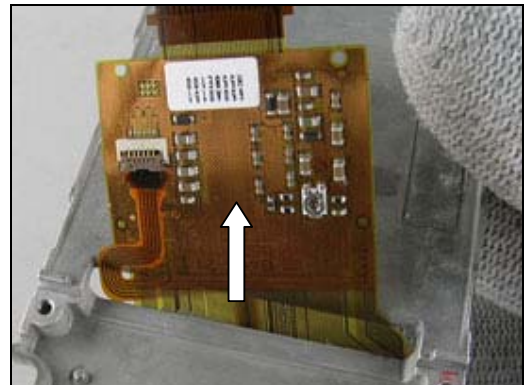


CLEAN THE FRAME LCD ASSY REAR WITH ISOPROPANOL!

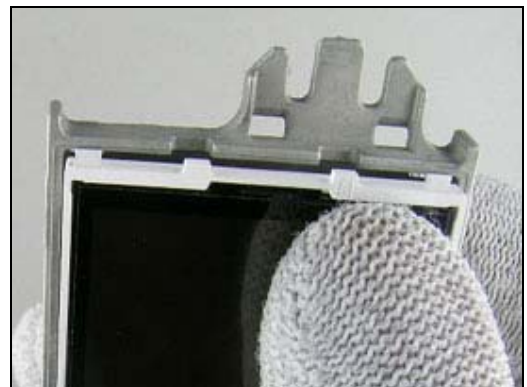
Attach new adhesive FPC LCD.



Slip the Flex Film through the gap.



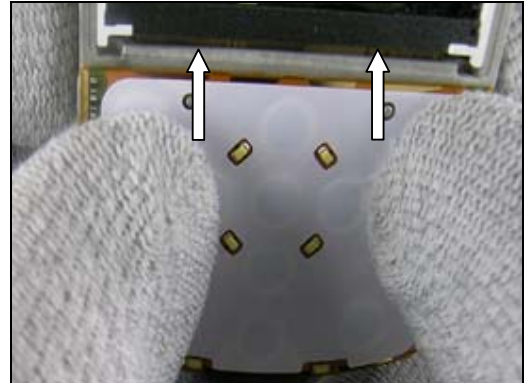
Place the LCD into the Frame LCD cavity and press the LCD into the Frame LCD.



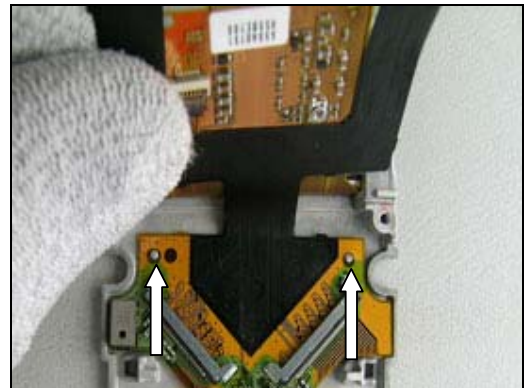
FPC LCD & LCD continued

THE SHEET KEY HAS GUIDING HOLES!

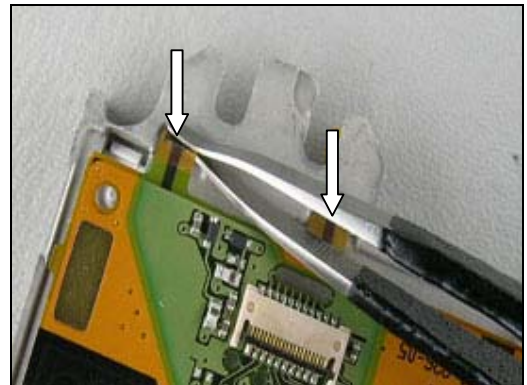
Use your fingers to position the FPC LCD Assy.



Bend the FPC LCD Assy around on the backside.
Use the pins to guide the FPC LCD Assy.

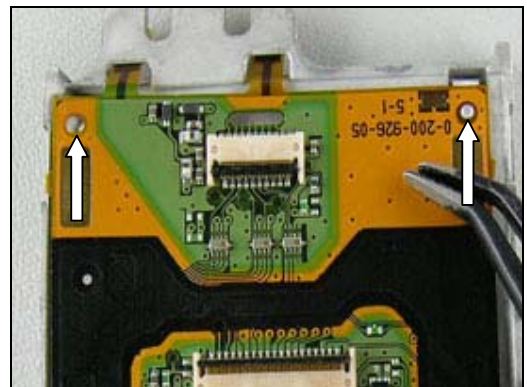


Continue to bend the FPC LCD Assy and guide it on to the two lower taps.
Slip the two Flex Films cables for the Loudspeaker through the two holes.



THE FPC ASSY HAS GUIDING HOLES!

Use a blunt pair of tweezers to position the FPC LCD Assy.



FPC LCD & LCD *continued*

Open the ZIF connector.

Use the Flex Film assembly tool to insert the Flex Film into the ZIF connector.



Close the ZIF connector.

Follow the Installation instructions of sections 3.27, 3.24 – 3.18 and 3.3 – 3.1.



4 Label

This instruction should be used when exchanging an old label or installing a new one.

ONE LABEL ONLY IS ALLOWED!

EQUIPMENT

The following equipment is required:

- Hot air flow solder station
- Blunt pair of tweezers
- Zebra printer connected to computer



REMOVAL

Follow the Removal instructions of section 3.1

- Read the old label and/or write the information into the "Label make" program before removal
- Note the position of the label before removal
- Heat up the label by using hot air, if needed.
- Carefully remove the label without causing scratches
- If there still are residues, clean the surface with isopropyl alcohol

INSTALLATION

- Check that the proper label format is loaded in the Zebra printer.
- Write a new label by using the program "Label make" and check that the printing is OK.
- Take the new label and place it onto the frame as in the adjacent picture.
- Make sure the label is placed in its proper position.

Follow the Installation instructions of section 3.1





5 Revision History

Rev.	Date	Changes / Comments
A	2005-11-24	Initial release
B	2006-04-03	Information in section "Read this first!" is changed since movies will open in Internet Explorer only (not Flash Player) due to compatibility problems with Flash Player 8.